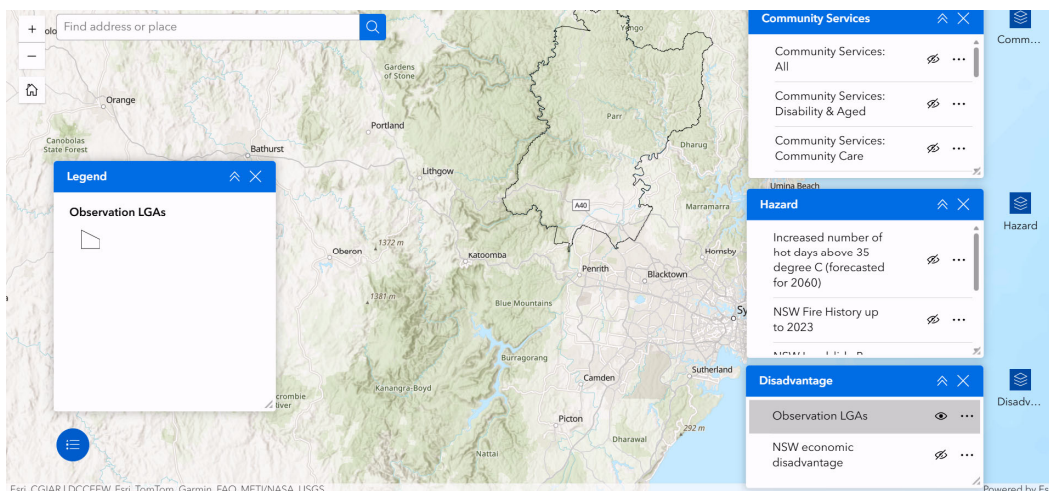


How to use the RiVA Mapping Tool

Access the interactive RiVA Mapping Tool [here](#)



The righthand side of the Mapping Tool contains menus for each data type.

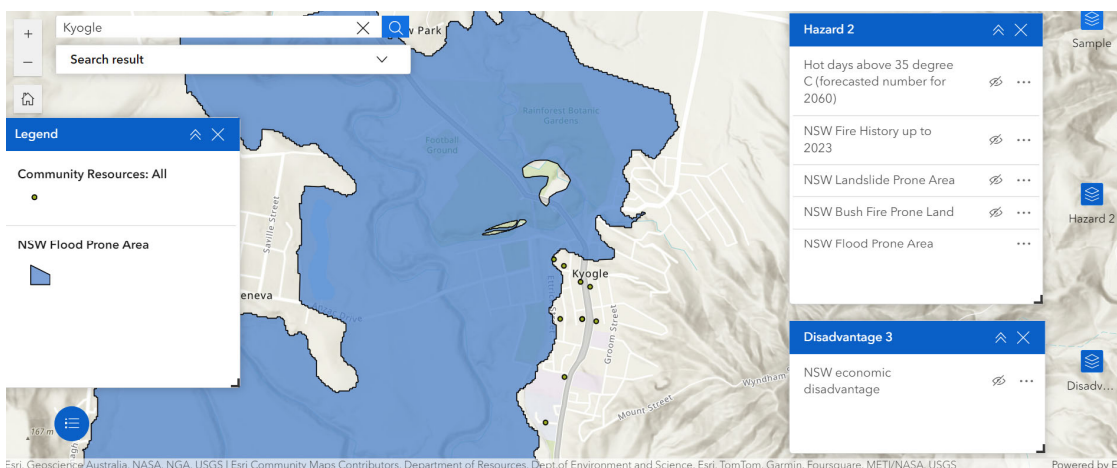
Menu 1: Community Services – information on Local Community Service Organisations provided by [InfoXchange](#).

Menu 2: Common hazards data – flood prone land, fire history and bushfire prone land, landslide prone land and forecast days over 35 degrees.

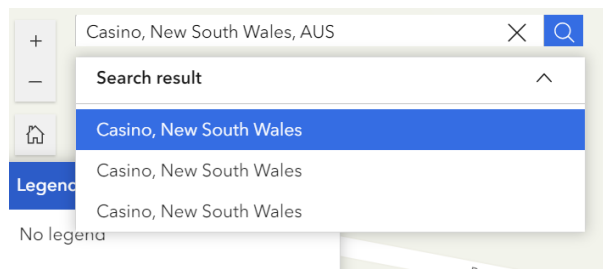
Menu 3: Socioeconomic data - poverty levels based on the NCOSS-NATSEM [Mapping Economic Disadvantage in NSW](#) from 2021 Australian Bureau of Statistics data.

On the lefthand side of the map, there is a **Legend** to show which data sets are open on the map. The initial map view shows 'Observation LGAs' – the map regions that contain RiVA data. Click of 'Observation LGAs' in the 'Disadvantage' menu to hide this data.

To zoom in or out on the map, use the + and – buttons in the top lefthand of the map.



1. Choose suburb or locality from search bar in right left-hand corner of map.

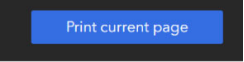


2. To display **local disaster hazards**

- From **Menu 2: Hazard** select hazard type/s of concern, e.g. bushfire history and bushfire prone land.

Note: some data sets are large and may take a few seconds to load.

Note: Hazard data may not be available for all regions.

- Zoom in/out to identify streets, neighbourhoods of most concern.
- To print or PDF an area of interest, Ctrl+ P, press button  at top of page

3. To display **socioeconomic data**

- From **Menu 3: Disadvantage** select 'NSW economic disadvantage'. There is only one data type in this menu - the proportion of people living in poverty.

Tip: this data is shown at [Australian Bureau of Statistics Statistical Area Level 2](#) and can be best viewed by zooming out. Use the [RiVA Data Dashboard](#) to look at socioeconomic data at smaller geographical areas.

- To print or PDF an area of interest, Ctrl+ P, press button  at top of page

4. To display **Community Services**

- From **Menu 1: Community Services** you can select 'Community Services: All' or Community Services by Main Service Types:

- | | |
|--|---|
| <ul style="list-style-type: none">○ Disability & Aged○ Community Care○ Food, Material & Financial Aid○ Family Support○ Mental Health & Counselling | <ul style="list-style-type: none">○ Housing & Homelessness○ Legal Advice○ Financial Counselling○ Youth Services○ Community Health |
|--|---|

- Click on a pin to see more information for a service.

Tip: the [RiVA Data Dashboard](#) has full service information.

